

PRODUCT FEATURES

STEP LADDERS



CENTER-PULL SPREADER BRACE

Unique center-pull spreader brace designed for one-hand operation. Brace is steel-plated for extra durability.



MOLDED TOP w/RECESSED TRAY

Our non-conductive, structural molded top provides greater impact resistance and durability than aluminum tops. A large part-holder tray is recessed 1/4"-deep and has tool slots.



PINCH-RESISTANT SPREADER BRACES

A version of our heavy-duty spreader braces with steel plating and a double-rivet hinge to protect users from pinched fingers.

RAPTOR BOOT™

Polypropylene copolymer upper boot protects the rails of your fiberglass ladder. Thick, non-marring thermoplastic elastomer tread is bonded and mechanically fastened to the upper boot to create a secure, slip-resistant footing. Inside, DaBoot™ has a unique open design that allows for quick and easy visual inspection of the ladder's rail.



RAPTOR TOP™

ProTop™ is a versatile and durable ladder top designed to increase your productivity. It is multifunctional and includes a hardware tray, magnet tray, drill and tool slots, paint bucket holder, and pipe or 2x4-holder. The curved, ergonomic front surface of the ProTop™ gives you more leg room for maximum comfort.



DOUBLE-RIVET STEP CONSTRUCTION

Each step is secured with six solid, large-headed rivets for maximum strength. This feature gives your ladder 30% greater shear strength than solid aluminum rivets.



FULL METAL BOOT™

Extra-heavy-duty cast aluminum shoes with a thick rubber tread. The rail is wrapped with reinforcement plates for durability. This is an exclusive Louisville Ladder design.



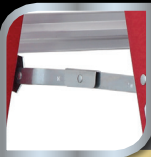
HEAVY-DUTY GUSSET BRACING

All our gussets are created with heavy-duty steel. The gussets are added to angle back braces and steps for extra support.



HEAVY-GAUGE METAL TOP

A metal tool tray top attached to the front rails of your ladder with four rivets, a shoulder bolt and nut-on-top hinge.



INSIDE SPREADER BRACES

Spreader braces are mounted inside the fiberglass rails of your ladder to help protect braces from getting hooked or damaged in transit.



MOLDED PAIL SHELF

Our optional Molded Pail Shelf features a variety of tool slots, a drill slot, and can securely hold a paint tray or any shape of paint bucket.



SLIP-RESISTANT RUBBER FEET

Angled, aluminum feet with a thick rubber tread on all four legs give you the security of sure footing.



WIDE BACK BRACES

Vertically-mounted, U-shaped back braces provide maximum stability and discourage unsafe climbing. The bottom back brace provides heavy-duty strength to the ladder base.

PRODUCT FEATURES

EXTENSION LADDERS



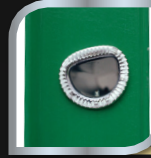
ALUMINUM PLATE CONNECTION RUNGS

Tempered aluminum rungs are hydraulically double-cripped to an aluminum plate. Each plate is fastened to the ladder's rails with four aluminum rivets.



CAST-ALUMINUM RAIL END CAPS

Our rail ends (on 1200HD Series, and AE1660) feature extra-heavy-duty cast-aluminum caps to give your ladder the protection and durability needed for longevity.



D-SHAPED RUNGS

The flat top, D-shaped rung provides a greater standing area than round rungs. They are fully serrated to give you a slip-resistant standing surface.

RUNG-TO-RAIL DIRECT CONNECTION

The ladder's rung passes through a punched hole in the rail, and is hydraulically crimped on both sides to form a tight, twist-resistant connection. Unlike other systems, this method does not rely on separate rivets, brackets, or sleeves to connect to the rail. Rather than being dependent on small-diameter rivets, the rung is permanently connected to and supported by the rail, giving your extension ladder rigidity and stability.



DOUBLE ROPE & PULLEY

All aluminum double pulley systems come with a rot-resistant manila rope for excellent performance in any conditions.



FULL I-BEAM

Side rails are extra-heavy-duty 3" I-beam extrusions for maximum strength.



FULL METAL BOOT™

Extra-heavy-duty cast aluminum shoes with a thick rubber tread. The rail is wrapped with reinforcement plates for durability. This is an exclusive Louisville Ladder design.



MAR-RESISTANT RAIL END CAPS

All of our rail ends (on applicable products) feature impact-resistant caps that prevent work surfaces from marring and give you the protection and durability needed for longevity.



MODIFIED I-BEAM

Side rails are full 3" extrusions shaped into a modified I-beam for lightweight strength. Interlocking rails keep fly and base sections from separating.



OUTSIDE SLIDE GUIDES

Two extra-heavy-duty outside slide guides are secured to the top of your extension ladder's base section with four rivets per guide. Protects you from overextending fly section.



PROGRIP™

Get a grip on your task! ProGrip's™ slip-resistant tread is integrated onto your ladder caps. This protects your support surface from damage. ProGrip™ includes easy-carry hand grips for your convenience.



PROTOP™

A multifunctional top designed to increase productivity. Featuring: corner grip, pole grip, integrated bumper, and work tray; all compact and accessible in a spacious design.



QUICKLATCH®

QuickLatch® Equipped RungLock provides a simple, intuitive method of securing the fly and base sections of your ladder when extended. You can operate QuickLatch® with one finger!



ROUND RUNGS

Round, tempered aluminum rungs are fully serrated for a slip-resistant surface. Each rung end is hydraulically double-cripped to your ladder's side rail.



RUBBER FLY-SECTION SHOES

Your extension ladder's fly section (on AE2800) is equipped with solid rubber end-cap shoes so you can use the fly section separately as a single ladder.



STACKED ALUMINUM I-BEAM RAIL

Extra-heavy-duty slide guides are secured to the top of your extension ladder's base section with four rivets per guide. (AE2800 Series only)



SWIVEL SAFETY SHOES

Heavy-duty steel plated shoes with thick rubber tread. The shoe can be used with the tread down or in a spiked position.